

## OTHER GOINGS ON



### SILVER CREEK & STEPHENSON RAILROAD

A ride on the Silver Creek & Stephenson is a quiet remembrance of the past when America traveled the rails by *steam power*. Tickets are purchased in the "Turn of the Century" Silver Creek Depot. Be sure to see the railroad memorabilia on display in the depot building and stop by and visit the souvenir shop in the Freight House.

ADULT TICKET— \$7.00 CHILDREN UNDER 12— \$3.00  
 Steam Train rides available the same days the Museum is open.



### COOPER-CORLISS STEAM ENGINE

Donated By:  
 Fred and Cynthia Carus  
 of LaSalle, Illinois

With it's *25'4" diameter* flywheel, our 130-ton Cooper-Corliss is one of the largest steam engines to be found in the United States. Club members moved the engine piece by piece from a factory in LaSalle/Peru IL where it powered a bank of *three* zinc rolling mills. While we run it at a lower steam pressure and slower speed today, in the factory it could have run at 45 rpm on 225 psi of steam producing a staggering *4,798 horsepower*.

The Cooper-Corliss operates the same days that the train runs.

In 2012 The Stephenson County Antique Engine Club  
 Is Proud To Host Our

### 43RD ANNUAL OLD TIME THRESHING & ANTIQUE SHOW

At the Stephenson County Fairgrounds

On August 3rd, 4th, & 5th

**\*Featuring\***

Antique Displays	Large Flea Market
Working Horsepower	Saw Mill
Blacksmith Shop	Antique Tractors
Daily Parade at 1:00 p.m.	Horse Pulls
Antique Tractor Pulls	Gasoline Alley

Adult Ticket \$6.00 Children Under 12 \$3.00

## TRAIN OF TERROR

A ride on The Silver Creek & Stephenson is usually a quiet remembrance of the past. On certain nights in October, however, ghosts and ghouls haunt our rails. On these nights, the train leaves the station for uncharted suspense! As the train rolls along, you never know what or who might step out of the darkness to greet you. Will the train return?? Come find out for yourself.

Train of terror operates:

6 pm to 9 pm On OCT. 6th, 13th, & 20th

All train of terror tickets— \$8.00

## 2012 SILVER CREEK MUSEUM SCHEDULE

MAY 27 & 28	MEMORIAL DAY (SUN. & MON.)
JUNE 16 & 17	FATHER'S DAY—QUILT SHOW
JULY 4	INDEPENDENCE DAY
AUG. 3, 4, & 5	43RD ANNUAL THRESHING & ANTIQUÉ SHOW
SEP. 3	LABOR DAY
OCT. 6 & 7	HOMEMADE SOUPS
OCT. 6, 13, & 20	TRAIN OF TERROR
OCT. 2 & 21	FALL HARVEST DEMONSTRATIONS SAUERKRAUT & BRATS

**STANDARD HOURS OF OPERATION — 11 AM TO 4 PM**

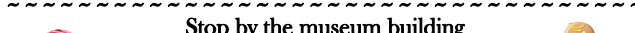
**ADULT ADMISSION — \$3.00**



### Join us for our Pancake Suppers

In 2012 we'll be cooking on  
 March 31st & November 3rd

Suppers are held at the Museum Building



### Stop by the museum building

December 7th & 8th for our  
 Cookie and Holiday Treat Sale



The Museum, Railroad Yard & Cooper-Corliss Are Located At:

2954 South Walnut Road  
 Freeport, Illinois 61032

### For More Information

**Phone:**

(815) 232-2306 Anytime  
 (815) 235-2198 — Days Of Train Operation Only

**On The Web:**

[www.thefreeportshow.com](http://www.thefreeportshow.com)

**Email:**

[thefreeportshow@thefreeportshow.com](mailto:thefreeportshow@thefreeportshow.com)

**-Or Contact-**

The Stephenson County Convention & Visitors Bureau  
 (800) 369-2955



Our Museum & Other Activities Are Sponsored By:

THE STEPHENSON COUNTY  
 ANTIQUE ENGINE CLUB

We are a not-for-profit educational organization whose goal is the preservation of America's historical heritage. Our club is made up of members that donate their time and knowledge to the many activities we share with the public. If you're interested in joining us, please don't hesitate to talk with a club member, give us a call, or send us an email.

# YOU'RE INVITED TO TOUR THE



# SILVER CREEK MUSEUM

### **\*FEATURING MANY DISPLAYS SHOWCASING\***

- Local History
- Early Americana
- Local Manufacturers and Their Products
- Antique Farm Implements and Equipment

# HISTORY INSIDE & OUT



LIKE THE COLLECTIONS HOUSED INSIDE, OUR MUSEUM BUILDING IS ALSO A PIECE OF HISTORY.

THE HEAVY STONE WALLS OF THE BUILDING WERE MINED ABOUT TWO MILES AWAY AT WHAT WAS THE SMITH QUARRY. A THREE STORY BUILDING WAS ERECTED FROM THIS STONE IN 1902.

THE ORIGINAL USE OF THE BUILDING WAS AS A COUNTY POOR FARM. IT WAS BUILT TO HOUSE THE INDIGENT AND PROVIDE WORK FOR THEM.

IN 1912 THE NAME WAS OFFICIALLY CHANGED FROM "POOR FARM" TO "COUNTY HOME". THE BUILDING BURNED IN 1927 LEAVING ONLY THE HEAVY STONE WALLS. AFTER THE FIRE, THE DECISION WAS MADE TO ERECT A NEW BUILDING USING THE NATIVE STONE WALLS. THIS TIME THE BUILDING ONLY HAD TWO FLOORS INSTEAD OF THREE. THIS IS THE BUILDING WE OCCUPY TODAY.

IN 1961 THE COUNTY BOARD VOTED THAT THE HOME BE CONVERTED TO A STATE APPROVED NURSING HOME.

AS THE BUILDING AGED AND NEEDS CHANGED A NEW BUILDING WAS REQUIRED. AS A RESULT OF THIS, A COUNTY WIDE REFERENDUM WAS PASSED TO BUILD A NEW ONE STORY STEPHENSON COUNTY NURSING HOME.

THE NEW BUILDING WAS ERECTED JUST NORTH OF THE OLD ONE, AND IN MAY OF 1987, THE LAST RESIDENT WAS MOVED OUT OF THE OLD BUILDING INTO THE NEW FACILITY.

THE STEPHENSON COUNTY ANTIQUE ENGINE CLUB ACQUIRED THE OLD COUNTY HOME BUILDING AND IN THE SPRING OF 1989 THE SILVER CREEK MUSEUM OPENED ITS DOORS TO THE PUBLIC.

# A PEEK AT SOME OF OUR DISPLAYS

OUR MUSEUM HAS A WIDE VARIETY OF EXHIBITS AND DISPLAYS THAT WILL APPEAL TO THE YOUNG AND THE NOT SO YOUNG.



**SCHOOL ROOM**  
NO COMPUTERS HERE. JUST THE THREE "R's" READING, RITING, and RITHMETIC.



**GENERAL STORE**  
IN THE DAYS BEFORE WAL-MART AND THE LIKE, MOST TOWNS HAD A STORE LIKE THIS. NOT ONLY COULD YOU GET SUPPLIES, YOU COULD ALSO CATCH UP ON THE LOCAL GOSSIP.

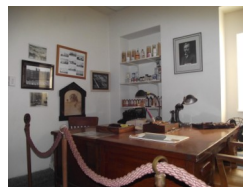
**MURAL OF FREEPORT**  
SPANNING TWO WALLS IN OUR MEETING ROOM, THIS LARGE MURAL BY VICKI CRONE DEPICTS FREEPORT'S DOWNTOWN FROM A BYGONE ERA.



**PERIOD HOUSE ROOMS**  
THERE ARE MANY DIFFERENT AREAS THAT ILLUSTRATE WHAT THE INTERIOR OF A HOUSE COULD HAVE LOOKED LIKE IN DAYS GONE BY.



**CLOTHING**  
VARIOUS ROOMS SHOWCASE STYLES OF VINTAGE WEDDING ATTIRE, MILITARY UNIFORMS, AND PAST SHOW QUEEN DRESSES.



R  
A  
W  
L  
E  
I  
G  
H



**LOCAL MANUFACTURERS**  
THE RAWLEIGH ROOMS ARE JUST ONE EXAMPLE OF THE MANY EXHIBITS WE HAVE OF COMPANIES THAT HAVE CALLED THE FREEPORT AREA HOME.

**FARMING**  
EXAMPLES OF FARM LIFE ARE FOUND THROUGHOUT THE BUILDING. PLEASE MAKE SURE TO VISIT THE FARM MUSEUM LOCATED ON THE BASEMENT LEVEL.



ALL THIS AND *SO MUCH MORE* IS WAITING TO BE DISCOVERED. WE HOPE YOU'LL MAKE PLANS TO VISIT US SOON.