

OTHER GOINGS ON



SILVER CREEK & STEPHENSON RAILROAD

A ride on The Silver Creek & Stephenson is a quiet remembrance of the past when America traveled by rail. Tickets are purchased in the "Turn of the Century" Silver Creek Depot. Be sure to see the railroad memorabilia on display in the depot building and stop by and visit the souvenir shop in the Freight House.

ADULT TICKET— \$7.00 CHILDREN UNDER 12— \$3.00

Train rides available the same days the Cooper is open.



SILVER CREEK MUSEUM

Featuring

Over 25 rooms of
Early Americana & Local History
Adult Admission \$4.00

With a wide variety of different displays, our museum offers something of interest to just about everyone, whether you're young or not so young.

The Museum is open the same days the Cooper runs.



Stop by the museum building on
December 2nd & 3rd for our
Cookie and Holiday Treat Sale



ACTIVITIES THROUGHOUT THE YEAR

In 2016 The Stephenson County Antique Engine Club
Is Proud To Host Our

47TH ANNUAL OLD TIME THRESHING & ANTIQUE SHOW

At the Stephenson County Fairgrounds

On August 5th, 6th, & 7th

Featuring

Antique Displays	Large Flea Market
Working Horsepower	Saw Mill
Blacksmith Shop	Antique Tractors
Daily Parade at 1:00 p.m.	Kids Area
Antique Tractor Pulls	Gasoline Alley

Adult Ticket \$6.00 Children Under 12 \$3.00

TRAIN OF TERROR

A ride on The Silver Creek & Stephenson is usually a quiet remembrance of the past. On certain nights in October, however, ghosts and ghouls haunt our rails. On these nights, the train leaves the station for uncharted suspense! As the train rolls along, you never know what or who might step out of the darkness to greet you. Will the train return?? Come find out for yourself.

TRAIN OF TERROR OPERATES:

6 PM TO 10 PM ON OCT. 8, 15, & 22

ALL TRAIN OF TERROR TICKETS— \$8.00



MAY 29 & 30

JUNE 18 & 19

JULY 4

AUG. 5, 6, & 7

SEP. 5

2016 Cooper Operation Schedule

MEMORIAL DAY (SUN. & MON.)

FATHER'S DAY WEEKEND

INDEPENDENCE DAY

47TH ANNUAL THRESHING &

ANTIQUÉ SHOW

LABOR DAY

STANDARD HOURS OF OPERATION— 11 AM TO 4 PM

ADMISSION FREE—DONATIONS APPRECIATED

The Cooper Corliss, Silver Creek & Stephenson Railroad
and The Silver Creek Museum

Are Located At:

2954 South Walnut Road

Freeport, Illinois 61032

For More Information

Phone:

(815) 232-2306 Anytime

(815) 235-2198 — Days Of Train Operation Only

On The Web:

www.thefreeportshow.com

Email:

thefreeportshow@thefreeportshow.com

-Or Contact-

The Stephenson County Convention & Visitors Bureau

(800) 369-2955



Our Cooper & Other Activities Are Sponsored
By:

THE STEPHENSON COUNTY
ANTIQUÉ ENGINE CLUB

We are a not-for-profit educational organization whose goal is the preservation of America's historical heritage. Our club is made up of members that donate their time and knowledge to the many activities we share with the public. If you're interested in joining us, please don't hesitate to talk with a club member, give us a call, or send us an email.

COOPER CORLISS



OPERATING 130-TON STATIONARY STEAM ENGINE

'CELEBRATING 102 YEARS OLD AND COUNTING IN 2016'

DONATED BY:

FRED & CYNTHIA CARUS

A LITTLE HISTORY



Our engine was built by the
C&G Cooper Co of

Mount Vernon, Ohio for the
Matthiesen-Hegler Zinc Co in

LaSalle, IL. In 1914 it was operating at the zinc
company along with four other similar engines.

The Cooper drove a bank of three zinc rolling
mills and was also used to drive a line-shaft. The

five engines rolled zinc for many different
applications. The largest consumer of rolled zinc
from the factory was for batteries.

AA, AAA, C, and D cells as well as 9volt. Recent
correspondence from Fred Carus states that the
last steam powered rolling mill at the factory was
retired in 1974 and replaced with a modern four
high strip mill.

In 1980 a member of our club heard about the
engines sitting in the building and that they were
destined to be scrapped. Fred & Cynthia Carus
were contacted and permission granted to see the
engines. On March 22, 1980 a group of 14 club
members took a field trip to see the engines.

Then club president Joe Maurer describes the
scene as an *Industrial Archaeological* find. Tools,
clipboards, and calendars all left as if the workers
had just left for the day. The only thing missing
were their lunchboxes.

The Carus' agreed to donate the engine to our
club and so the hard work began. The engine
had to be disassembled piece by piece and
moved. The work was dirty, dank, dark,
sometimes wet, and always dangerous. It took
well over a year to get all the pieces back to
Freeport. Over time, the engine was put back
together piece by piece on its current site.
On July 13, 1991 about 40 visitors watched as
the Cooper was started for the first time in its
new home.

All this was done by the many club members and
some businesses that donated their time and/or
equipment to help on the project.

THINGS TO SEE IN THE BUILDING



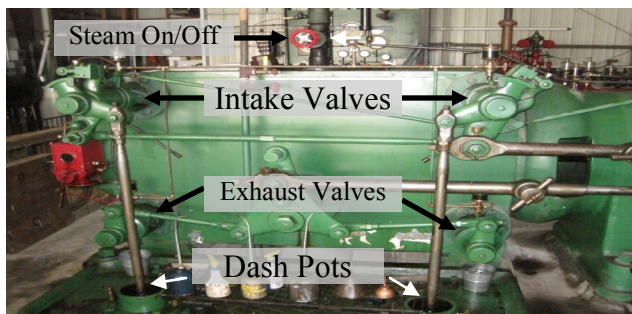
FLYWHEEL

With a flywheel diameter of
25'4" and weighing 130 tons,
our Cooper is one of the
largest steam engines to be
found in the United States



BROWNELL STEAM ENGINE

Total engine weight is 30-tons. It
has a 15" bore with a 20" stroke.
The flywheel is 7'1" in diameter.



CORLISS VALVE ASSEMBLY

The dash pots use vacuum to snap the intake valves closed,
making the engine run more efficiently.

CROSS-HEAD

The cross-head is used to convert
the circular motion of the
connecting rod to a linear motion.
The piston needs the linear motion
to properly seal the steam in the
cylinder.



CONNECTING ROD & CRANKDISK

Steam pushes the piston and attached
rod against the cross-head which in turn
moves the connecting rod. The
connecting rod drives the crankdisk. The
crankdisk is attached to the crankshaft.



HAND CRANK

The long red wooden handle with attached
hook is used to turn the flywheel to place
the piston in the correct position for starting
the engine.



TROY-ENGBERG STEAM ENGINE

Along with it's attached oil pump, is used
to supply oil for the central oiling system.



RUMLEY STEAM TRACTION ENGINE

Built pre-1900's. Once used on the
farm for a variety of tasks such as
threshing, pulling a plow, etc.



LARGE STEAM WHISTLE

Was used in downtown Freeport at
Micro Switch Plant 2 (The former
Henney factory). It could be heard all
over town when it was blown at 7am,
12 noon, and 1,3,&5pm. It was taken out
of service in the early 1970's due to the
high cost of producing the steam to
operate it.

COOPER SPECIFICATIONS

Weights:

Engine Total	130 Tons
Base & Cylinder	24 Tons
Outboard Bearing	8 Tons
Flywheel	60 Tons
Flywheel Section	5 Tons
Crankshaft	25 1/2 Tons
Concrete Base	200 Tons
Governor Counterweights	70lbs. each
Connecting Rod	2350 lbs.

Other Info:

Diameter Of Flywheel	25'4"
Circumference Of Flywheel	79'7"
Dog-Bone Shaped Keys In Flywheel	96
Number Of Arms In Flywheel	12
HP At 45rpm w/225psi steam	4,798
Average Torque At Hub	250,000 ft/lbs
Cylinder Bore	32 inches
Stroke	62 inches